

OF-H2.0 Hallway/Elevator Lobby : occupancy sensing

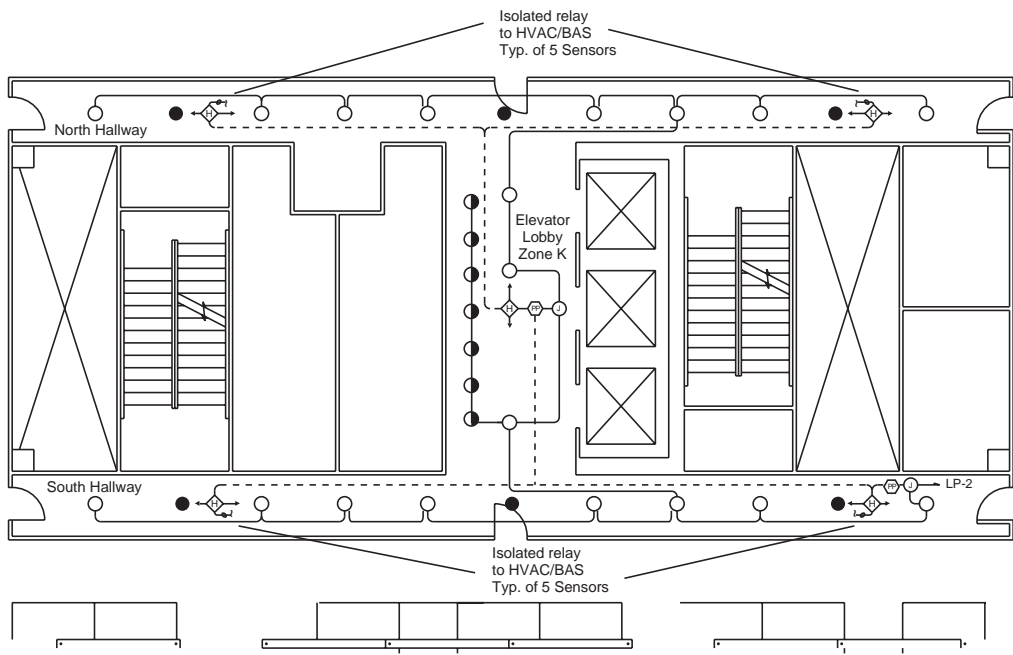
Control Needs	Solution	Application Description
Automatically turn lights ON/OFF based on occupancy	Ultrasonic occupancy sensors (WT series)	Space use: General circulation Corridor dimensions: 90' x 6' Elevator/Lobby dimensions: 30' x 12' Ceiling height: 10' Window: None Window blinds: None
Occupancy-based control of mechanical system	Isolated relay in occupancy sensor	
Night lights ON all of the time	Night lights are not controlled	
Night lights operate during power outage	Power night lights through emergency panel	

Lighting

Recessed compact fluorescent downlights with compact fluorescent wallwashers in elevator lobby, using 42-watt triple tube CFL lamps and 277 volt electronic ballasts.

Design Considerations

Lighting in the corridor and elevator lobby is automatically turned on and off based on occupancy using the WT ultrasonic occupancy sensor. The WT-2250 has a coverage pattern that is designed specifically for hallway use. Lighting status signals are sent to the HVAC/BAS system using the isolated relay in the occupancy sensor.

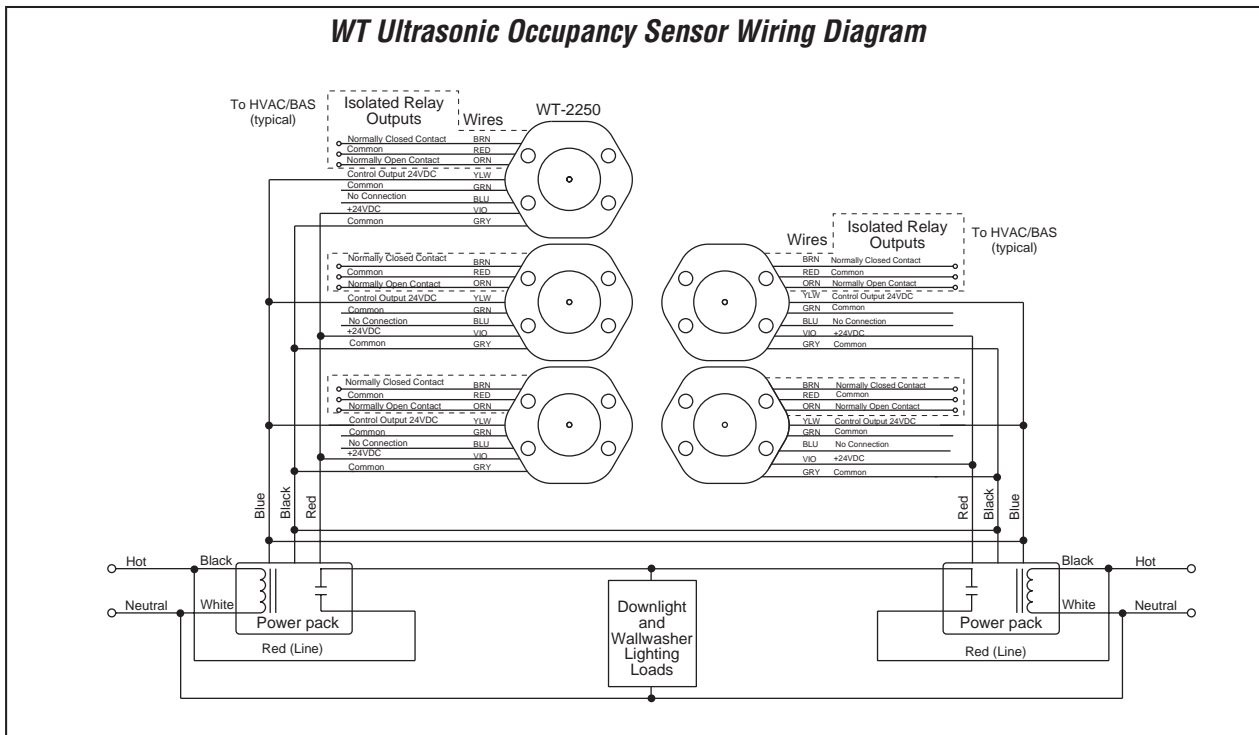
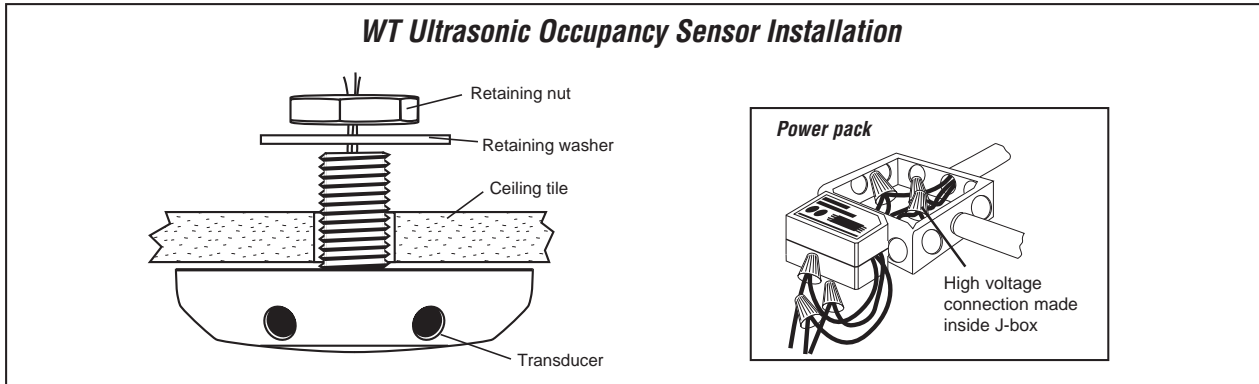


LEGEND	
	WT-2250 ultrasonic occupancy sensor
	B277E-P power pack
	Recessed compact fluorescent downlight
	Junction Box
	Recessed compact fluorescent downlight on night light circuit
	Wallwashers
	Low voltage wiring
	Line voltage wiring



OF-H2.0 Installation Notes

1. Mount the WT ultrasonic sensor on a rigid, vibration-free surface. Aim transducers down the hallway.
2. WT sensor is shipped with a factory preset time delay of 16 minutes and sensitivity set to 50%. Set time delay to at least 20 minutes by adjusting the dip switches according to the DIP switch setting table in the installation instructions.
3. Use a minimum of 22 gauge wire for low voltage wiring. See Technical Bulletin TB-124 on Voltage Loss at www.wattstopper.com.
4. Confirm night light/egress lighting requirement with local code officials.



Equipment Schedule (per floor)

Catalog No.	Qty	Description
WT-2250	5	Ultrasonic sensor ceiling mounted in hallway, 90 linear ft, 360° coverage, isolated relay
B277E-P	2	Power pack, 277 VAC, 60 Hz