

## OF-H1.0 Hallway/Elevator Lobby : time scheduling

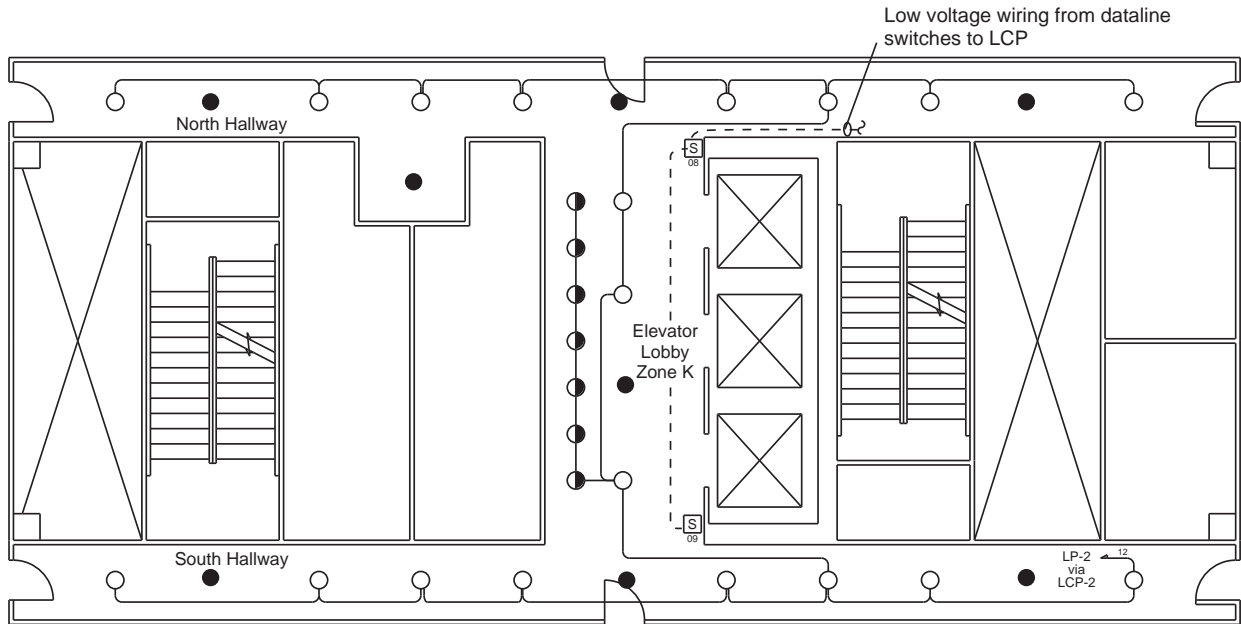
Control Needs	Solution	Application Description
Manual ON and scheduled OFF during business hours	Dataline switches and time clock in Smartwired lighting control panel	Space use: General circulation Corridor dimensions: 90' x 6' Elevator/Lobby dimensions: 30' x 12' Ceiling height: 10' Window: None Window blinds: None
Manual override ON with automatic shut off for after hours	Dataline switches and time clock in Smartwired lighting control panel	
Occupancy-based control of mechanical system	Isolated relays in Universal Switch Module	
Night lights ON all of the time	Night lights are not controlled	
Night lights operate during power outage	Power night lights through emergency panel	

### Lighting

Recessed compact fluorescent downlights with compact fluorescent wallwashers in elevator lobby, using 42-watt triple tube CFL lamps and 277 volt electronic ballasts.

### Design Considerations

Lighting in the hallway and elevator lobby is manually turned on using dataline switches and scheduled off using a time clock located in a Smartwired lighting control panel. All lights are controlled on the same channel and remain on during the day. Lighting status signals are sent to the HVAC/BAS system using the isolated relays in the Universal Switch Module.



Refer to **OF-OP1.0** on p. 25-30 for installation notes, diagrams, dataline switch wiring and equipment list

LEGEND	
○	Recessed compact fluorescent downlight
●	Recessed compact fluorescent downlight on night light circuit
◐	Wallwashers
—	Line voltage wiring
- - -	Low voltage wiring
□ S	Dataline switch
□ LP-2	Circuit breaker panel
□ LCP-2	Lighting control panel



## OF-H1.0 Installation Notes

1. Refer to Smartwired Switching System Installation and Operation Summary for detailed installation and operation instructions of the lighting control panel.
2. Commission the time clock according to the Network Clock Automation Scenarios documentation, and test the operation after commissioning.
3. Assign relays to the channels as shown on the Smartwired Relay schedule.
4. Confirm night light/egress lighting requirement with local code officials.

**See OF-OP1.0 (pages 26-27) for:**

- **Wiring Diagrams**
- **Panel Documentation**

## Equipment Schedule *(per floor)*

Catalog No.	Qty	Description
<b>Smartwired</b>		
HIN24R24SP	1	Smartwired Control lighting control panel interior, 24 relays
HTUB24D	1	Tub enclosure for lighting control panel with DIN rail, up to 24 relays (30.5"x24"x4.5")
HCVR24SLD	1	Surface mounted cover for lighting control panel, up to 24 relays (30.7"x24.2"x.75")
HCLK8SS	1	Network clock/programmer for Smartwired control
HUSM8SS	1	Universal switch interface module
HPSM115/277	1	Power supply for lighting control panel, 115/277 VAC, 50/60 Hz
HDLS1SS	2	Dataline switch, 1 button, single gang, includes wall plate
HDLW4		Dataline wire, 18 AWG (7 strands x 26 AWG) using 2 independent twisted pair (specify feet)