



Wireless Miro Lighting Control System

PROJECT

LOCATION/TYPE

DESCRIPTION

Wireless Miro is a new lighting control system for residences, restaurants, meeting rooms and more. It comprises power and control devices working together to manage lights and other devices in a room or a whole house.

Users can set and recall lighting scenes for different times of day or different activities. Power devices include Dimmers, Switches, Fan Controls, and Plug-in Modules. Control devices include wall mount House and Room Scene Controllers, Multilocation Controllers, House and Room Scene Remotes, and Repeaters.



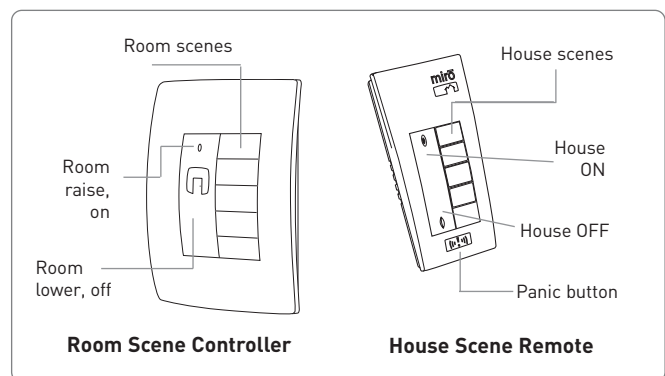
OPERATION

With Wireless Miro power devices, users can control a range of loads: dimmable lighting loads with Miro Dimmers, non-dimmable lights, motors and appliances with Switches, ceiling fans with Fan Controls, and lamps and tabletop fountains with Plug-in Modules.

With Wireless Miro control devices, users can select scenes from convenient access points throughout the home. House Scene Controllers and Remotes enable push-button recall of scenes from any location. Room Scene Controllers and Remotes provide easy one-touch access of scenes for rooms or other living areas. Repeaters increase the wireless network range in larger installations and expand functionality to afford realistic occupancy emulation. RS232 network controller and scene interface modules allow for integration of lighting and other home automation systems.

FEATURES

- Distributed lighting control, including scene control, dimming, and coordinated control of non-dimmable loads
- Topdog™ RF communication protocol; 900MHz Radio, bidirectional
- No control wiring necessary
- Up to 1000 times faster than conventional power line technology
- Frequency-agile (902-928 MHz), automatically seeks best channel for local environment
- Unsurpassed system capacity (127 rooms, 1023 groups/devices)
- Up to 100' range; up to 300' with two Repeaters
- Self-configuring network simplifies user setup
- UL listed; 5 year warranty

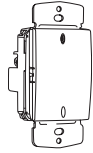




Wireless Miro Lighting Control System

SPECIFICATIONS & ORDERING INFORMATION – Power Devices

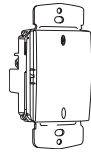
Incandescent Dimmer



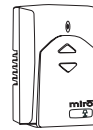
Universal Dimmer



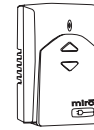
Switch



Lamp Module



Appliance Module



Fan Control



Product Description

2-wire dimmer for switch-leg circuits

3-wire dimmer for most load types

Relay switch for non-dimmable loads

Plug-in dimmer for floor and table lamps

Plug-in relay switch for non-dimmable loads

4-speed controller for 1-2 ceiling fans

Ordering Information

Warm white
Light almond
Charcoal gray

MRD2-W
MRD2-A
MRD2-G

MRD4-W
MRD4-A
MRD4-G

MRD3-W
MRD3-A
MRD3-G

MRP6-W

MRP7-W

MRD9-W
MRD9-A
MRD9-G

Voltage	120V	120V	120V	120V	120V	120V
Max Load	600W*	600W*	800W	300W	800W	1.5A
Min Load	60W	25W	N/A	25W	N/A	N/A
Neutral required		•	•	•	•	•

Load Types

Incandescent	•	•	○	•	○	
Dimmable magnetic low-voltage		•	○	•	○	
Dimmable electronic low-voltage		•	○	•	○	
Dimmable neon, cold-cathode		•	○	•	○	
Dimmable 2-wire fluorescent **		•	○	•	○	
Non-dimmable lighting loads			•		•	
Motors, pumps, up to 1/8 HP			•		•	
Ceiling fan(s)						•
Appliances			•		•	

Features

Square-law dimming	•	•		•		
Last level recall	•	•		•		•
Auto-on				•	•	
Zero-crossing airgap relay			•		•	
Air-gap isolation switch	•	•				•
Long-life status LED	•	•	•	•	•	•
Default fade rate	2 sec	2 sec		2 sec		
Overload protection	•	•	•	•	•	•
Short-circuit protection	•	•		•		•
Topdog™ Communications	•	•	•	•	•	•
Room scenes	15	15	15	15	15	15
House scenes	10	10	10	10	10	10
PANIC function	•	•	•	•	•	

* Subject to derating when more than one dimmer is ganged together or when using non-incandescent loads. See Miro Cut Sheet #18301 for details.

** Advance MK X or equivalent

○ Switches a dimmable load type

SPECIFICATIONS & ORDERING INFORMATION – Control Devices

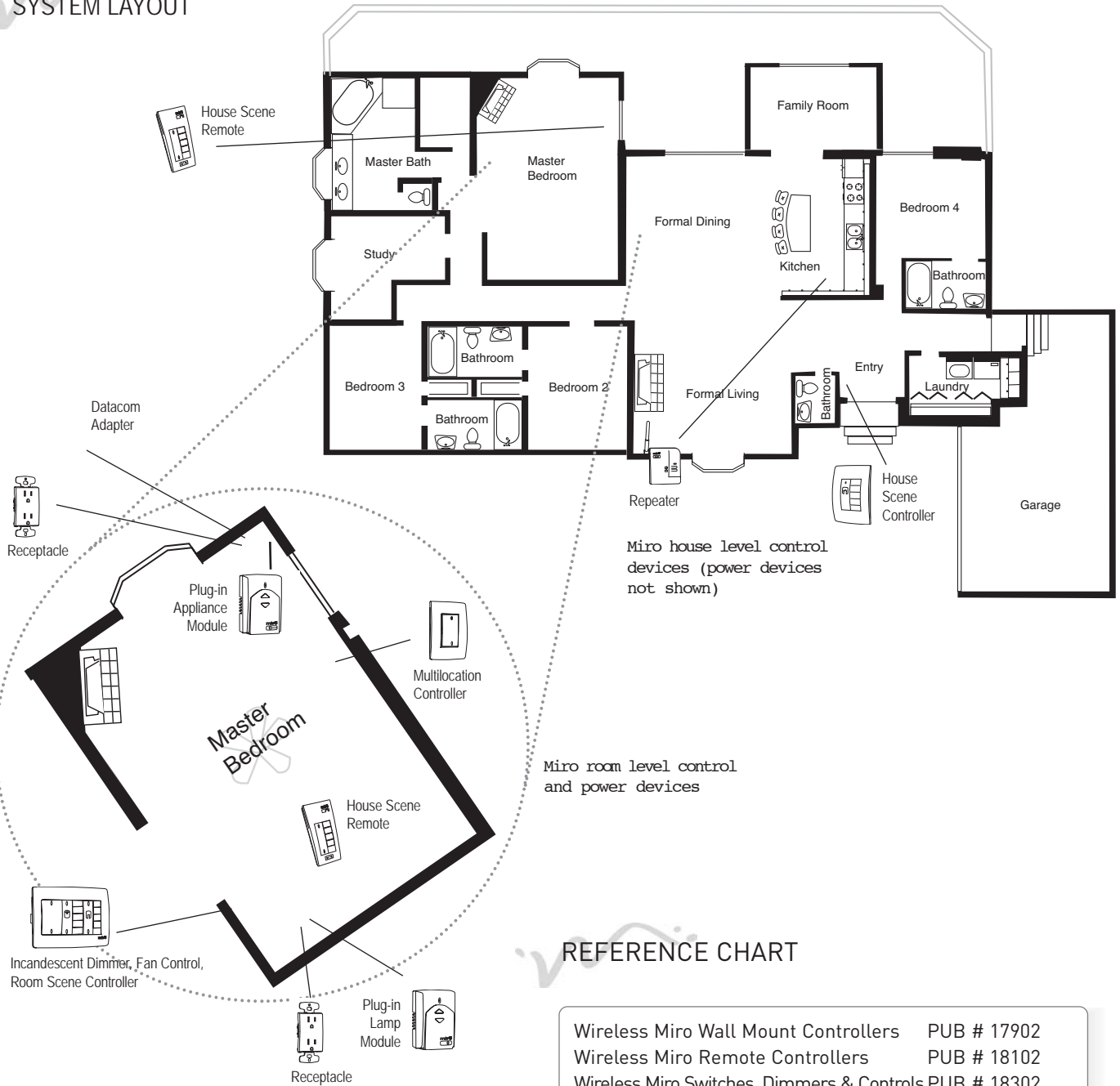
	Wireless Multilocation Controller	Wireless Room Scene Controller	Wireless Room Scene Remote	Wireless House Scene Controller	Wireless House Scene Remote	Wireless Repeater
Product Description	Use 1 or more for multilocation control with any power device	Program and recall 5 Room scenes	Program and recall 5 Room scenes plus individual load control	Program and recall 5 House scenes	Program and recall 5 House scenes plus panic control	Increase radio range, supply occupancy emulation
Ordering Information	Warm white <input type="checkbox"/> MRD8-W Light almond <input type="checkbox"/> MRD8-A Charcoal gray <input type="checkbox"/> MRD8-G	<input type="checkbox"/> MRD6-W <input type="checkbox"/> MRD6-A <input type="checkbox"/> MRD6-G	<input type="checkbox"/> MRH6-G	<input type="checkbox"/> MRD5-W <input type="checkbox"/> MRD5-A <input type="checkbox"/> MRD5-G	<input type="checkbox"/> MRH5-G	<input type="checkbox"/> MRR2-G
Voltage	120V	120V	Battery	120V	Battery	120V
Neutral required	•	•	N/A	•	N/A	•
Features						
Long-life status LED	•	•	•	•	•	•
Topdog™ Communications	•	•	•	•	•	•
Group raise/lower	•		•			
Room raise/lower		•	•			
Room on/off		•	•			
Seek Function			•			
Room Scenes		5/15	5/10			
House Scenes				5/10	5/10	
Sets of Scenes		3	2	2	2	
House ON/OFF				•	•	
Panic Function					•	
Preprinted Scene Labels		•		•		
Occupancy Emulation				•	•	•
Configuration Lock		•	•	•	•	

Environmental

All Miro electronic products are rated for ambient temperatures between 0-40°C [32-104°F], humidity 0-80% non-condensing

Wireless Miro Lighting Control System

SYSTEM LAYOUT



REFERENCE CHART

Wireless Miro Wall Mount Controllers	PUB # 17902
Wireless Miro Remote Controllers	PUB # 18102
Wireless Miro Switches, Dimmers & Controls	PUB # 18302
Wireless Miro Plug-in Modules	PUB # 18002
Wireless Miro Repeater	PUB # 18202
Wireless Miro Touch Screen	PUB # 18602
Miro Wall Plates	PUB # 17802
Miro Wiring Devices	PUB # 17702