

# DLM Computer Interface Tools and Software

PC interface tool and software for configuring DLM systems

Components of Digital Lighting Management integrated control systems

Provides valuable calibration and setup documentation for LEED projects



Active real-time monitoring of DLM system

Allows pre-configuration of rooms before installation



## Product Overview

### Description

The LMCI-100 Digital Computer to DLM interface connects to a PC's USB port running the LMCS-100 Digital Lighting Management computer software and to a Digital Lighting Management (DLM) system through the RJ45 connector. The computer tools allow users to read, store and modify DLM system configurations.

### Operation

The user connects the LMCI-100 to a DLM local network by plugging an LMRJ cable connected to that network into the device's RJ45 port. To connect to the LMCS-100 software, the user plugs the LMCI-100's USB connector into the USB port of a PC, then starts up the LMCS-100 software. **LMRJ cables should never be plugged into an Ethernet port on a computer or wall.**

PROJECT
LOCATION/TYPE

### PC-Based Configuration

LMCS-100 software features intuitive graphics to identify current DLM system settings, allowing users to easily store or modify settings. With the software, users can also reconfigure DLM devices by changing parameters and/or setting operational values. LMCS software may also be used to load new firmware with enhanced features into DLM devices without removing installed products.

### Applications

Designers can take advantage of these computer interface tools to simplify project design, startup and documentation. The LMCS software can be used to set up many advanced features of DLM devices that are beyond the scope of Plug n' Go, Push n' Learn and the LMCT-100 wireless configuration tool. Furthermore, the LMCI-100 and LMCS-100 facilitate preparation of commissioning documentation, which is especially helpful for LEED projects.

## Features

LMCI-100:

- RJ45 and USB connectors to interface between DLM network and PC
- For use with LMCS-100 software
- RoHS compliant

LMCS-100:

- Windows based
- Easy-to-use graphical user interface
- For use with LMCI-100 Digital Computer to DLM Interface



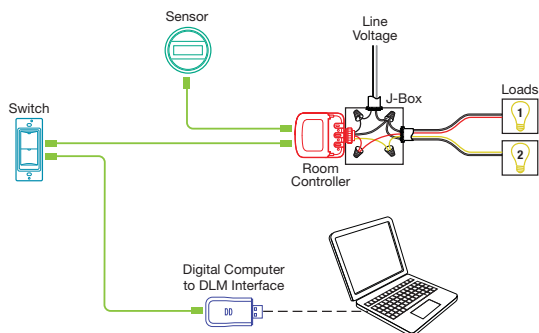
## Specifications

- LMCI-100:**
- NOT FOR USE WITH ETHERNET CONNECTIONS
  - PC connection: USB connector with removable cover
  - DLM local network connection: 1 RJ45 port
  - LED for signal sent indication
  - Operating temperature: 32 - 95°F (0 - 35°C)
  - FCC part 15 compliant
  - Five year warranty

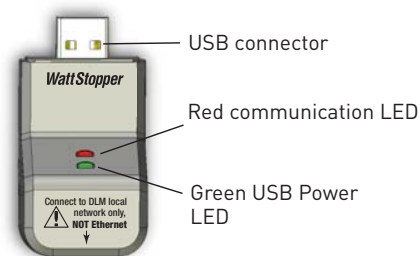
- LMCS-100:**
- Automatically searches for updates
  - Requires PC with USB port running Windows 7, Windows XP, or Vista

## Connections to DLM System

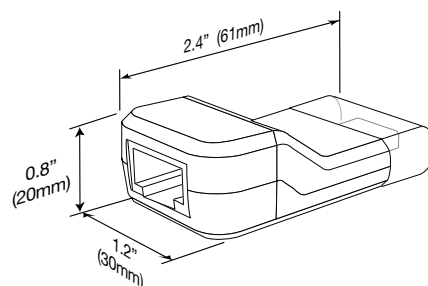
### Connecting to a DLM Local Network



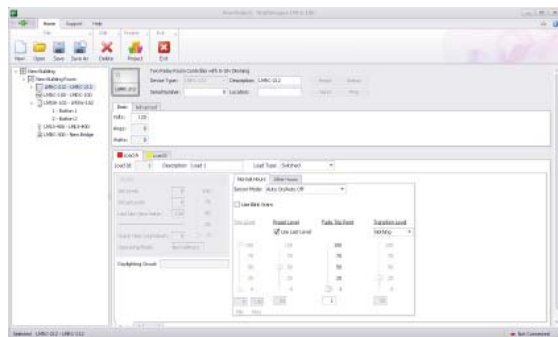
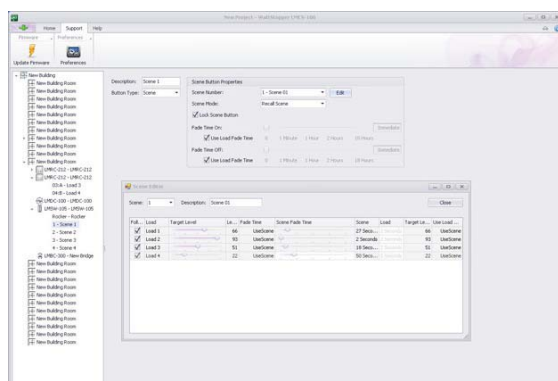
### LMCI-100 Indicators



### LMCI-100 Dimensions



### LMCS Software



Typical LMCS screens.

## Ordering Information

Catalog No.	Description
<input type="checkbox"/> LMCI-100	Digital Computer to DLM Interface
<input type="checkbox"/> LMCS-100	DLM Computer Software (automatically ships with LMCI-100)